

# Pro-style function, plenty of polish

More space plus attention to detail turned a hemmed-in cooking space into a high performer with sophisticated country charm By JORGE S. ARANGO • Photographs by ANDREW BORDWIN



{ before }

**before** A low ceiling, fussy wallpaper, and not enough prep space made the dated kitchen feel cramped.

**after** Raising the ceiling, annexing adjacent spaces, and warming up the decor led to a more functional, inviting room for Loren Camps (ABOVE) and her family.

Renovations that begin small often have a way of growing. When avid cook Loren Camps and her husband, Christopher, undertook the redo of the narrow kitchen in their 1960s raised ranch in Katonah, New York, they mainly envisioned a fresh look and new appliances. But along the way, with a nudge from interior designer Debra Geller, the plan expanded. To add height and length, Geller suggested raising the ceiling and absorbing the dining room, which would be relocated, to make room for a sitting area. She gave the kitchen a traditional “unfitted” look with a hutch and pantry made from custom cabinets in Provençal blue and a peninsula with a country-table profile. Crown molding, cornices, and paneling unite the room while suggesting vintage French furniture, and together with wide-plank oak floors, a glass chandelier, and a comfy sofa make the high-functioning space a gathering place, too. Originally it “wasn’t planned for hanging out,” says Loren. “Now it is.”

## before+after: kitchen

→ **Crown molding**, together with the strong horizontal lines of the mantel, help ground the vaulted ceiling. Cooktop: Wolf

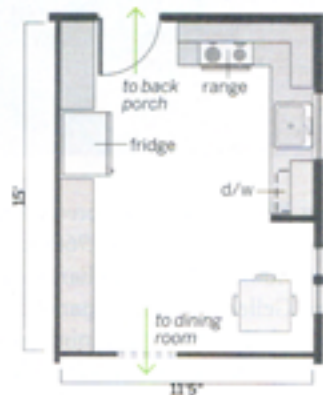
↓ **Ceramic tile backsplashes** inspired the color scheme. The tiles' varying shapes, sizes, and matte and glossy finishes add texture. Tile: Encore Ceramics



↑  
**Millwork details** like these pilasters elevate the feel of the cooking space.

## before

The low-ceilinged kitchen, at 152 square feet, couldn't handle a crowd.



### tips on trim

Learn all about crown molding, from its history to its application, at [thisoldhouse.com/bonus](http://thisoldhouse.com/bonus)

## after

Annexing the dining room nearly doubled the square footage; raising the ceiling allowed cabinets to climb.

**2 Installed a custom hutch** to store tableware and anchor a peninsula that has drawers for spices and cutlery. The peninsula also provides extra prep space and a social hub.

**1 Annexed the dining room** to add about 140 square feet, allowing a better layout and room for hanging out.



**3 Reworked the windows**, replacing one over the sink with two; closing up a pair to make room for the fridge and pantry; and replacing two in the former dining room.

**4 Moved the fridge** to allow space for double wall ovens set into full-height cabinets. Sink and range kept their old spots to minimize plumbing hassles.

**5 Put in a pantry unit** to store provisions and visually balance the hutch opposite it.

before+after: **kitchen**

## • the key details

→ **The built-in hutch**, made from custom cabinets, is integrated into the peninsula with a marble slab that has an antiqued finish. Low stools preserve the open look. Crema marfil counters: *New England Stone*. Cabinets and stools: *Debra Geller Interior Design*

↓ **The paneled fridge** has sculptural satin-nickel appliance pulls that add to its finished look. Fridge pulls: *RK International Inc.*



### pro tip

DEBRA GELLER, INTERIOR DESIGNER, POUND RIDGE, N.Y.

“Instead of an island, maximize space in a narrow room with a multipurpose peninsula, with drawers for storage plus space for meal prep and gathering.”



← Wavy-glass fronts reinforce the built-in hutch's vintage look.

↓ **Turned legs**, a drawer with a bin pull, and a scalloped apron (which echoes trim on the hutch) give the hardworking peninsula table a country-kitchen look. Cabinet knobs and pulls: *Baldwin Hardware*



← **The deep, footed pantry**, with condiments kept handy inside one door, has wire-mesh fronts, suggesting an old-fashioned pie safe. To its left is the fridge, behind cabinet-like panels.

# { May 2011 } directory

**Cover:** **Landscape designer:** Berghoff Design Group, Scottsdale, AZ; 480-481-3433; berghoffdesign.com. **Designer and stylist:** Teresa Ridlon, Ridlon Interiors, Tempe, AZ; 480-730-4884; ridloninteriors.com. **Pavers:** (similar to shown) Roman Dominion; mutualmaterials.com.

**Home Solutions:** (pp. 19–26) **Heavy-lifting helpers:** **Dresser:** American Artisan tall dresser in cinnamon, Ethan Allen; ethanallen.com.

**Before + After Kitchen:** **Pro-style function, plenty of polish** (pp. 29–32) **Designer:** Debra Geller Interior Design, Pound Ridge, NY; debragellerinteriordesign.com. **Builder:** NY-CT Development Corp.; nyctdevcorp.com. **Cabinetmaker:** C.A.M. LLC; 203-853-7912; camllwork.com. **Tile:** Encore Ceramics from Artistic Tile; artistictile.com. **Fridge:** Sub-Zero; subzero.com. **Sink:** Herbeau Creations; herbeau.com. **Faucet:** Rohl; rohlhome.com. **Microwave:** GE; geappliances.com. **Cabinet, hutch, pantry, and stool design:** Debra Geller Interior Design. **Fabric on stools:** Pierre Deux's Aumont, Color #530. **Café table and chairs:** Avant Garden Ltd.; avantgardenltd.com.

**Budget Redo:** **A cheerful kitchen makeover for \$935** (p. 37) **Wall color:** Gentle Tide, Glidden; glidden.com. **Cabinet and trim color:** Powdered Snow, Behr; behr.com. **Island:** Stenstorp kitchen island, IKEA; ikea.com.

**Shopping:** **Ceramic penny-round tile** (pp. 39–42) **Thanks to** Bryan Byrd, American Restoration Tile; 501-455-1000; restorationtile.com. Mark Ferrante, Ferrante Tile, Stoneham, MA; 781-396-6327.

**Get This Look:** **Rustic French dining room** (pp. 46–47) **Wicker chair:** Key West in Rubbed Black, Ballard Designs; ballarddesigns.com. **Water glasses:** Symphonie and Wisteria, Comptoir de Famille; comptoirdefamille.net. **Pillow:** Dark Kilim, Ethan Allen; ethanallen.com. **Ceiling lamp:** Large Porter Pendant, Pottery Barn; potterybarn.com. **Flatware:** Brasserie Ivory, Comptoir de Famille. **Trestle:** Vika Lilleby in black, IKEA; ikea.com. **Metal chair:** Garden Side Chair in Brushed Aluminum, Home Decorators Collection; homedecoratorscollection.com. **Rug:** Weaves Natural Fiber Sisal; overstock.com.

**Price Wise:** **Outdoor rugs** (p. 49) **High-End:** Trans-Ocean Ravella Stripe Red; outdoorrugonly.com. **Budget:** Trans-Ocean Tropez Stripe Red; csnstores.com.

**Landscaping:** **Grow fruits and veggies anywhere** (pp. 51–53) **For more information:** *Edible Landscaping: Now You Can Have Your Gorgeous Garden and Eat It Too!*, by Rosalind Creasy (Sierra Club Books, 2010). *All New Square Foot Gardening: Growing More in Less Space!*, by Mel Bartholomew (Cool Springs Press, 2006).

**Salvage:** **Wood interior doors** (pp. 65–67) **Sconces:** Studio Single French Library Sconce in bronze finish, Visual Comfort; neenaslighting.com.

**Photoshop Redo:** **A better facade for a farmhouse** (p. 68) **Thanks to** Marsha Topham, CG&S Design-Build, Austin, TX; 512-444-1580; cg&sdb.com. **Bracket:** 16x18x3 Craftsman bracket, Architectural Elements; wholesalemilwork.com. **Sconce:** Mission Medium Round Wall Sconce, Triarch International Inc.; thegreatindoors.com. **Paint:** Rainy Afternoon (shutters

and door), Rushing River (clapboard), Raindance (board and batten), Cloud White (trim), Benjamin Moore; benjaminmoore.com. **Shutters:** Louvered shutters, Builders Edge; homedepot.com.

**Weekend Remodel:** **Install three-piece crown molding** (pp. 71–78) **Thanks to** Craig Tolmie, Tide Mill Restoration, Fairfield, CT; 203-382-4656.

**Building Blocks for a Perfect Patio** (pp. 80–87) **Curving concrete:** **Landscape architect:** Teri Ravel Kane, San Jose, CA; 408-893-6080; terikane.com. **Colorful squares:** **Landscape architect and specialty contractor:** Robin Hanway LLC; 804-814-4529; robinhanway.com. **Speckled gravel:** Judy Kameon, Michael Kirchmann Jr., and Ivette Soler, Elysian Landscapes, Los Angeles, CA; 213-380-3185; elysianlandscapes.com.

**TOH TV:** **The art of the seamless addition** (pp. 89–93) **General contractor:** HomeFront Design + Build; Los Angeles, CA; 323-732-4663; homefrontbuild.com. **Interior designer:** Rachel Horn Interiors; Los Angeles, CA; 310-295-0100; rachelhorn.com. **Landscape design:** Melanie Williams Landscapes Inc.; Los Angeles, CA; 323-938-3094; melaniewilliamslandscapes.com. **Landscape construction:** Arrow Sprinkler & Landscape; Sylmar, CA; 818-890-8008; arrowsprinkler.com. **Custom cabinetry:** Bucklan Design Woodworks; Los Angeles, CA; 330-717-7893; bucklandesign.com. **Kitchen appliances:** GE; geappliances.com. **Smoke alarms and ladders:** Kidde; kidde.com. **Wood flooring:** Lumber Liquidators;

lumberliquidators.com. **Ventilation systems:** Broan NuTone; broan.com. **Lighting and cabinet hardware:** Rejuvenation; rejuvenation.com.

**Living Large in a Small Space:** (pp. 94–99) **Landscape design:** Kinsella Landscape Inc., Blue Island, IL; 708-371-0830; kinsellandscape.com. **Thanks to** Renee Mercer of Kinsella Landscape.

**All About: Landscape lighting** (pp. 100–105) **Thanks to** Thomas M. Williams, Williams Landscape Lighting Design, Portland, OR; 503-477-7019; wld.us. Jeff Dudley, Garden Light Inc., Tampa, FL; 813-901-5595; gardenlightinc.com. Mark Piantedosi, Commonwealth Landscape Lighting, Acton, MA; 978-857-0164; commonwealthlandscapelighting.com. Paul R. Gossett, NightScenes Corp., Kingsland, TX; 325-423-0653; night-scenes.com.

**Ask TOH:** (pp. 107–115) **Tool test** **Thanks to** Josh Clack, Keep Smiling Plumbing Repair Service, Snellville, GA; 770-979-7997; keepsmilingplumbing.com. ■

**Time Inc. and This Old House Ventures do not endorse any product or service mentioned or advertised in this magazine.**

This Old House (ISSN 1088-2633) is published monthly, except for the January/February and November/December issues by The Old House Ventures, Inc., 135 West 30th St., New York, NY 10001 (212) 9-1270 (956). Canada Post Publications Mail Agreement No. 4022278. Return undeliverable Canadian addresses to: Postal Box 405, Toronto, ON M5W 1T2 (519) 477-2000. Principal office: Rockefeller Center, New York, NY 10020-2193 (212) 422-9400. Howard Averb, Treasurer. ©2011 The Old House Ventures, Inc. All rights reserved. Reproduction in whole or in part without permission is prohibited. Periodicals postage paid at New York, NY, and additional mailing offices. Postmaster: Send address changes to This Old House, P.O. Box 62076, Tampa, FL 33662-3766; 1-800-898-2211. Subscriptions: \$29.99/yr (single year). This Old House and the This Old House logo are registered trademarks of The Old House Ventures, Inc. Printed in the U.S.A.